



Estate Agents • Lettings • Land & New Homes



43.. The Knowle, Hoddesdon, EN11 8LD

Offers In Excess Of £500,000

Offered Chain Free is this well-presented four-bedroom family home is located within walking distance of several highly-rated Ofsted schools and less than one mile from Broxbourne Station. Recently refurbished to enhance space and quality, this property is situated in a quiet cul-de-sac.

The extended kitchen-diner serves as a spacious and functional area, ideal for family meals and social gatherings. There are four good sized bedrooms, utility area and separate WC. The integral garage also offers potential to convert STPP and you have off street parking directly in front.

The front of the property overlooks a wooded area, providing a pleasant view. The low maintenance landscaped garden at the rear offers well-planned outdoor space, perfect for relaxation and leisure. To arrange a viewing, contact Lanes Estate Agents.



Entrance Hall

Doors to Bedroom Four, Garage and Utility. Large Cupboard and stairs to first floor

Ground Floor W/C

WC, Wash hand basin, window to front aspect

Bedroom Two

12'1 x 8'8 (3.68m x 2.64m)

Second double bedroom with fitted wardrobes, view to front aspect.

Garage

Integral garage with electric, lighting and storage shelves.

Shower Room

Shower and wash hand basin, with under floor heating

Snug

12'9 x 9'0 (3.89m x 2.74m)

Utility Room

6'5 x 6'6 (1.96m x 1.98m)

Space for Washing Machine and Tumble Dryer. Door and Window to Rear Garden

Landing

Doors to rooms and stairs to upper floor

Lounge

15'7 x 11'1 (4.75m x 3.38m)

EXCELLENT full width room with pretty views to copse. Bay window and 2nd window to front aspect. Amtico style flooring throughout lounge and landing.

Kitchen Breakfast Room

17'10 x 15'6 (5.44m x 4.72m)

NEW modern wrap around kitchen / diner, double oven and grill. Separate gas hob, space for fridge freezer, excellent range of base and eye level units and worktop areas.

Stainless steel sink with Franke instant hot tap. Window and second bay window overlooking rear garden

Landing

Bedroom One

13'6 x 9'8 (4.11m x 2.95m)

Large main double bedroom with fitted wardrobes, views to garden, loft access.

Bedroom Three

13'11 x 8'6 (4.24m x 2.59m)

Great size ground floor DOUBLE bedroom with Amtico flooring, fitted wardrobes and ensuite shower room.

This is ideal as a guest bedroom or for a teenager.

Bedroom Four

8'8 x 6'5 (2.64m x 1.96m)

Good size ground floor Guest Bedroom

Family Bathroom

Newly fitted fully tiled bathroom, Panel bath with overhead shower, wash hand basin and WC. Anti-mist mirror with touch sensor light and inbuilt shaver socket.

Front Garden

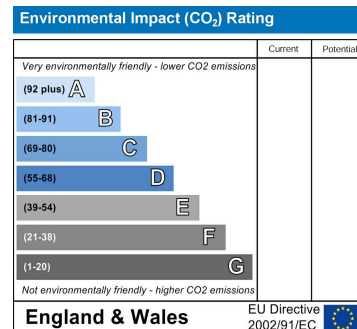
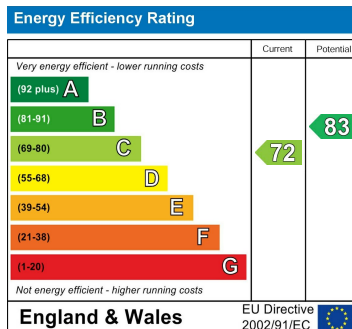
Formal front garden with drive way to internal garage

Parking

Driveway

Rear Garden

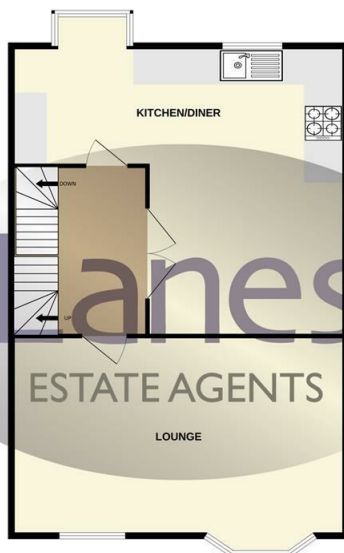
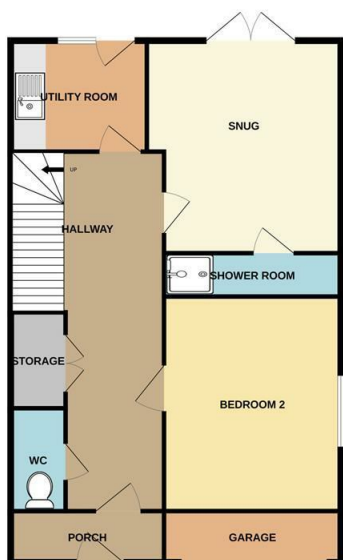
EXCELLENT Low maintenance landscaped garden to rear aspect



GROUND FLOOR

1ST FLOOR

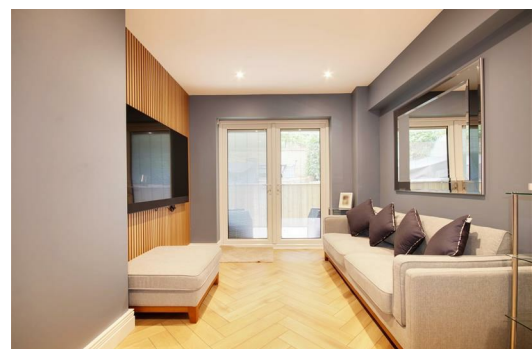
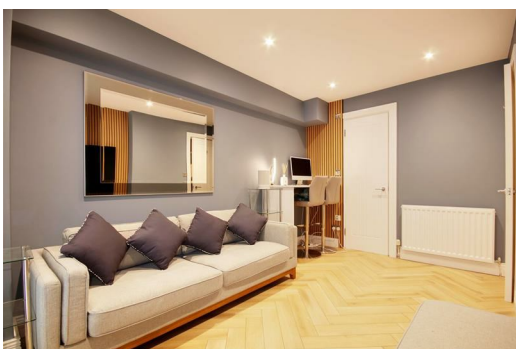
2ND FLOOR



Whilst every attempt has been made to ensure the accuracy of the floorplan contained here, measurements of doors, windows, rooms and any other items are approximate and no responsibility is taken for any error, omission or mis-statement. This plan is for illustrative purposes only and should be used as such by any prospective purchaser. The services, systems and appliances shown have not been tested and no guarantee as to their operability or efficiency can be given.
Made with Metropix ©2024

IMPORTANT NOTICE TO PROSPECTIVE PURCHASERS

We are not qualified to test any apparatus, equipment, fixtures and fittings or services so cannot confirm that they are in working order or fit for their intended purpose. We do not have access to property deeds or lease documents so prospective purchasers should rely only on information given by their solicitors on relevant matters. Measurements are approximate and are only intended to provide a guide.



17 College Road, Cheshunt, Hertfordshire, EN8 9LS

Tel: 01992 620 101 Email: ch@lanesproperty.co.uk www.lanesproperty.co.uk

